



## UltraStream Manual Benchtop and Undersink Installation

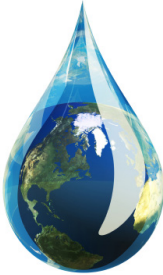
ULTRA PURE ALKALIZING IONIZING HYDROGEN RICH ANTIOXIDANT  
WATER FILTER SYSTEM

**To ensure safety, please read this manual carefully  
before installation and follow the instructions herein.**

**Store this manual in a secure place for future reference**

Welcome to the growing world tribe of AlkaWay water lovers!  
Your new UltraStream by AlkaWay is a 'state of the art' water system.  
It is designed by us to provide you with many years of ultra-pure alkaline ionized  
hydrogen rich water.

## Contents:



- Important Information ..... 3
- Safety Tips..... 3
- Service and Warranty ..... 3
- Detox Effects ..... 3
- Benchtop Installation ..... 4
- Filter Replacement Benchtop ..... 6
- Undersink Installation ..... 7
- Testing pH & Setting Flow ..... 12
- Measuring Your Aerator ..... 12
- Troubleshooting ..... 13
- Filter Replacement Undersink ..... 14
- What to Expect ..... 15
- Recommended Tips..... 16 - 17
- Our Story ..... 18
- Alkaline Water & Hydrogen ..... 15 / 19

## Introduction

We encourage you to read the manual carefully and  
keep a copy of this manual for future reference.

AlkaWay and your vendor are not responsible for incorrect or  
negligent application of this manual's directives.

# Important Information

## Molecular Hydrogen Production 'The Drip'

**Your UltraStream may initially drip/spurt for short time after use.** This is the result of the molecular hydrogen being created by our special O-Dobi alkalizing media as it reacts with water in your UltraStream. From more information about molecular hydrogen see page 15.

**If you decide you really won't be able to tolerate a drip, you can return your UNUSED unit** (*Only valid within 30 days of purchase, Must be in new condition*).

## The UltraStream Filter

We have University laboratory tested the UltraStream to 3600 litres (950 gallons), more than sufficient for a family of 4, each drinking 2 litres per day under normal municipal water quality conditions. We suggest 12 months or 3000 litres (800 gallons) whichever comes first.

## Warranty

AlkaWay Australia offers **3 years warranty** (other countries contact your local distributor).

We cannot guarantee 12 months or 3000 litres filter life. All water filters are dependent upon the quality of your source water, and will fail if excessive contaminants and sediment enter the filter (Unless there is a manufacturer defect).

If installing the UltraStream yourself, please remain in compliance with this manual to maintain your warranty.

You **must** use a vented faucet for all undersink installation (due to hydrogen production).

See full warranty policy in the country of purchase.

## Safety Tips

Do not run hot water through your UltraStream.

UltraStream is not designed for use by young children without responsible adult supervision.

UltraStream is constructed of EPA approved recyclable BPA-free plastics. All media and materials used are US and EU approved.

## Detox Effects

New drinkers may experience a range of symptoms. Most common are body aches, headaches, fogginess or skin conditions.

All of these conditions may be caused by stored toxins in the body being released, but if symptoms persist contact a registered medical practitioner. It's always wise to notify your general practitioner of any change to your health regimen.

Once you become a regular drinker you may experience a whole range of positive health symptoms.

You will find fellow user's stories on our website and we'd love to share yours!

**AlkaWay is not liable nor responsible for any damage resulting from user installation contrary to instructions in this manual.**

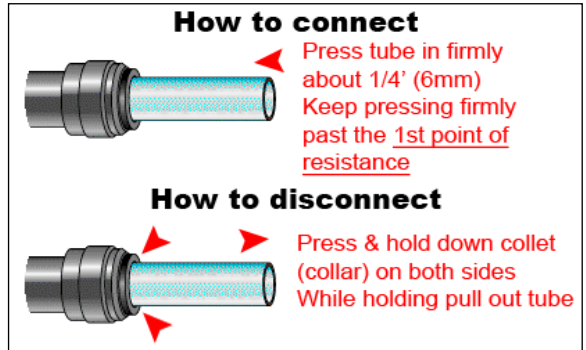
# Benchtop Installation - Part 1

## Handy Tips

Familiarize yourself with 'Quick Connect' fittings. These are special patented connection tools that allow ultra-simple connection of hoses and pipes. To attach a hose, all you need to do is push the hose into the fitting.

To remove, all you need do is push on the collet (ring) around the hose and pull on the hose at the same time, using the Quick Connect Spanner (butter knife or fingertip also work).

## Quick Connect



## Parts List

1. Flow Diverter & Hose (benchtop only)
2. Spout
3. Cap
4. Main Filter
5. Base
6. Ring Adaptors (benchtop only)



Available in Black/Stainless and Porcelain White  
(In certain countries, Black/Stainless shown)

# Benchtop Installation - Part 2

## 1. REMOVE AERATOR FROM YOUR FAUCET

Most modern mixer taps have an aerator that can be unscrewed counter-clockwise (make sure you keep this in a safe place, as often they are unique to each tap and hard to replace).

## 2. ATTACH DIVERTER TO FAUCET

Screw the adaptor ring to the diverter (hand tight). Then screw the adaptor ring diverter assembly to the tap (use a little Teflon plumbers' tape if needed), taking care not to twist the hose.

## 3. ATTACH DIVERTER TO FAUCET

If you need the hose to be shorter... remove the hose by unscrewing the knurled collar from the diverter and pull off the hose from the diverter. Then cut the hose to the required length. Push the hose back onto the diverter and re-screw on the knurled collar tightly.

## 4. TURN ON WATER

Push the diverter pin to divert flow into your UltraStream.

## 5. FLUSH THE NEW FILTER

Run the ultrastream for approximately 5-10 mins at around 1-2 litre (0.26-0.5 gallons) per minute to remove filter dust residues and fully soak the filter media.

## 6. TURNING OFF

When you turn off the flow at your faucet, filtered water may still flow for 10-20 seconds. This is due to residual pressure that may build up inside the UltraStream's highly efficient filter. It will also drip for some time due to the power of the hydrogen generation in the filter.

## 7. ADJUST THE FLOW

Go to page 12.

## 8. HOW TO MEASURE YOUR AERATOR

Go to page 12.

## 9. TROUBLESHOOTING

Go to page 13.



# Changing the Filter - Benchtop

1. Pull off the cap and spout.
2. Slide off the stainless steel sleeve (*Stainless Steel version only*).
3. To give more grip put the UltraStream on its side and take off the base plate off the base (the base plate is optional and newer model UltraStreams do not have this).
4. Grip the base and turn the filter anti-clockwise to unscrew the filter.
5. Put the new filter on the base and evenly screw the filter on clock-wise (don't over tighten).
6. Slide on the stainless steel sleeve (*Stainless Steel version only*).
7. Replace the cap, spout and base plate (make sure you align the blue tap with the groove in the base plate).
8. Flush the new filter for 10 minutes on a slow flow rate.



Figure 1



**Black & Stainless Steel version only**

(If stuck turn the filter upside down, hold the stainless steel and tap on benchtop)



# Undersink Installation

Congratulations on choosing the AlkaWay Undersink Kit for your UltraStream water system. By following the steps in this instruction sheet you'll have the best of both worlds - fabulous UltraStream water - and clear bench space, with minimum of fuss.

*We've designed this guide to be a step by step process,*

***The first step is to check that you have everything you will need.***

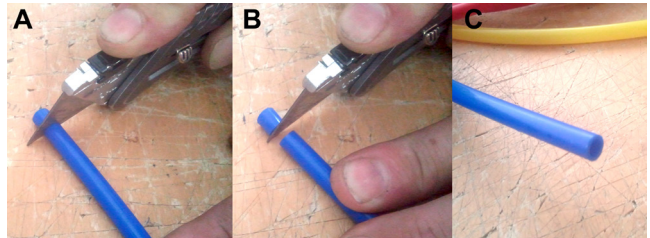
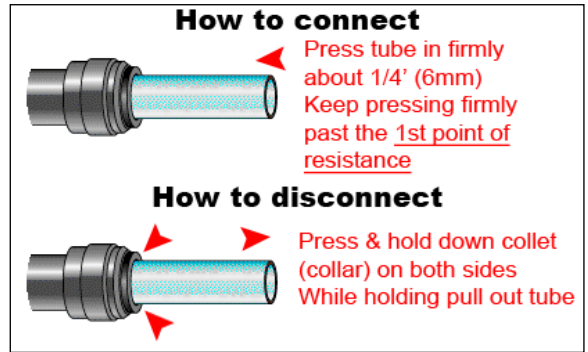
## Handy Tips

Familiarize yourself with 'Quick Connect'. These are special patented connection tools that allow ultra-simple connection of hoses and pipes. To attach a hose, all you need to do is push the hose into the fitting

To remove, all you need do is push on the collet (ring) around the hose and pull on the hose at the same time, using the Quick Connect Spanner or fingernail.

It's important to remember is to ensure the end of the hose is cut cleanly and at right angles.

## Quick Connect



We have designed our undersink kit to be fully compatible with the UltraStream benchtop unit.

- Ceramic Faucet valves
- Manufactured in same USA factory
- Vented faucet design for safety
- Quick Connect attachments for simple install
- Video support for install ([support.alkaway.com](http://support.alkaway.com))
- Step by step instructions

*For videos, help and support go to [support.alkaway.com](http://support.alkaway.com)*

# What you will need (other than what's in this kit)

- Electric Drill.
- Metal Hole Saw - 25mm to 32mm (1 inch to 1-1/4 inches) for stainless steel sinks. For stone benches we recommend contacting a expert.
- Masking Tape.
- Rasp or Sand paper.

## Undersink Kit Content



**Size Converter:**  
Connects UltraStream to the faucet via the **BLUE** hose.



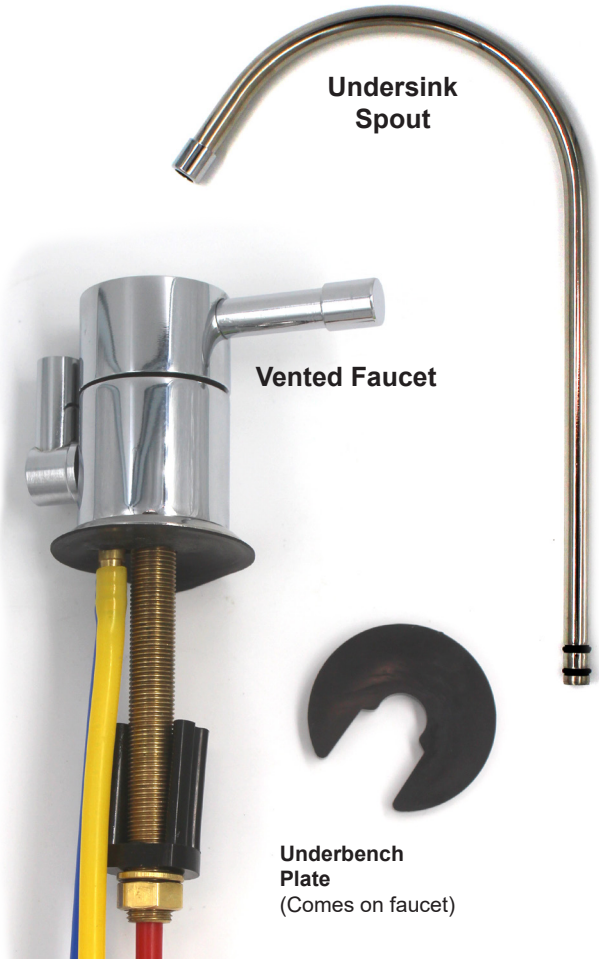
**Cold Water Connector**



**Quick Connect Spanner**  
Used to remove Size Converter to change filter. *(Keep it handy. You'll need it to change, a butter knife also works).*



**PLV**  
(Pressure Limiting Valve)



**Undersink Spout**

**Vented Faucet**

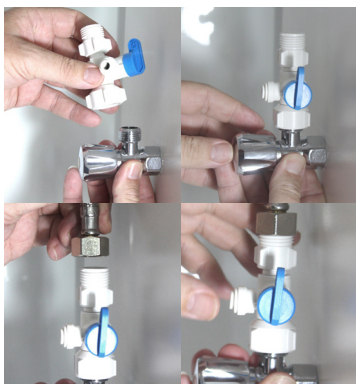
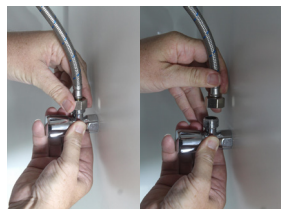
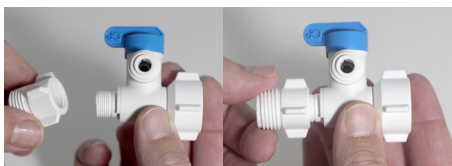


**Underbench Plate**  
(Comes on faucet)



# 1: Supply and Connect the Undersink Connector.

1. Hand tighten the cold water connector.
2. Turn off the cold water using the shut-off valve below the sink or house water mains.
3. After shutting off the water open the kitchen faucet draining the remaining water out of the line. Turn on a (lower) garden tap to drain the water line.
4. Place a container below the sink, under the shut off valve and disconnect the cold water line.
5. Install the Cold water connector. (Make sure it's turned OFF).
6. Reconnect cold water line.



## 2: Position and Drill the Vented Faucet Hole

Locate a position on the bench top or sink which will ensure the UltraStream Vented Faucet spout can flow into the sink when running and turned off.

You can use the Underbench plate to help with placement and finding the centre, and make sure you can access this hole from under the sink/benchtop.

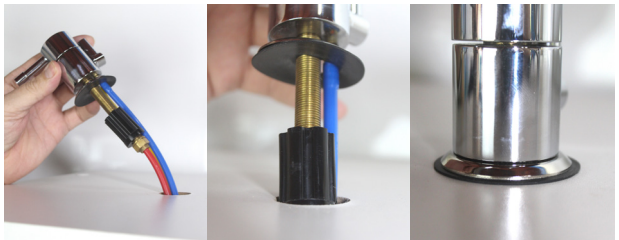
1. Place tape over the spot where you are to drill to allow the drill to stay centered.
2. Drill a hole between 25mm-32mm (1 inch to 1-1/4 inches) hole in sink top. Drilling in stone requires an expert.
3. Smooth any sharp edges using a rasp or sand paper so you don't damage the tubes when installing.

### 3: Install Vented Faucet

1. Loosen the brass nut and slide out underbench plate and place aside.



2. **Above the sink** > feed the tubes in to the drilled hole making sure the rubber seal is in place.



3. **Below the sink** > Insert underbench plate and hand tighten the brass nut (only use a spanner if necessary. **Do not over tighten**).



4. Push spout into the hole in the top of the faucet.



### 4: Install Pressure Limiting Valve (PLV).

1. Cut about 20cm off the **RED** hose (cut at right angles and cleanly).
2. Check flow direction. The flow must point towards the UltraStream.
3. Install the PLV by pushing firmly each cut end of the hose into either end of the PLV.
4. Connect the **RED** tube to the PLV.



## 5: Install UltraStream Unit

(see Quick Connect Connector Usage Instructions on previous page)

1. Position the UltraStream in desired location under the sink.
2. (Optional) Remove the base plate. (the base plate is optional and newer model UltraStreams do not have this).
3. Connect the **YELLOW** tube to the bottom of the UltraStream.
4. (Optional) Replace the base plate.
5. Insert the Size Converter into the outlet on the top of the UltraStream. Then connect the **BLUE** tube into the top of the Converter as shown.
6. (Optional) Turn off the water again and cut all the tubes to adjust length (see "How to cut tubes") Make sure you leave enough tube length to easily change your filter.



**Note: Cutting the tubes to be as short as possible undersink may seem a good idea, but remember that if you do choose to cut them, you will not be able to easily relocate the UltraStream to the benchtop for filter replacement.**

## 6: Test and Flush

1. Make sure Cold water connector tap is turned off.
2. Turn water ON at mains or shutoff valve.
3. Turn on Cold water connector tap and look for any leaks.
4. If leaking, check that the leaking tube is firmly inserted into the connector. If there is still a leak, remove the tube for the Quick Connects and re-cut tube end.
5. Now turn ON the vented faucet and check again for leaks.
6. Run the ultraStream for approximately 5-10 mins at around 1-2 litre (0.26-0.5 gallons) per minute to remove filter dust residues and fully soak the filter media.
7. Optional: You can adjust the flow rate also by adjusting the blue and white tap at the bottom of the UltraStream (see next section).

# Testing pH and Setting Flow

## Testing pH

How to test the pH of your water.

1. Add 2-3 drops of this reagent to 30ml of water to be tested.
2. Mix well.
3. Compare the final colour of the solution to the enclosed colour chart to get your reading (It's a good idea to use a white background).
4. pH Color Readings pH<7 Acidic, pH=7 Neutral, pH>7 Alkaline.

## Setting the Flow Rate

How to get the correct water flow rate from your UltraStream.

1. Turn your UltraStream on its side.
2. Locate the base plate with two holes and remove (base plate is optional and may not come with some UltraStreams).
3. Locate the blue and white tap.
4. Full flow rate occurs when the blue and white tap is in line with incoming hose.
5. For best performance flow rate should be approximately 2 litre (0.5 gallon) per minute.

## Measuring Your Aerator

Standard faucet adaptor rings are supplied with the UltraStream. These adaptors meet the Australian standard tap/faucet thread sizes and will fit most tap ware in Australia.

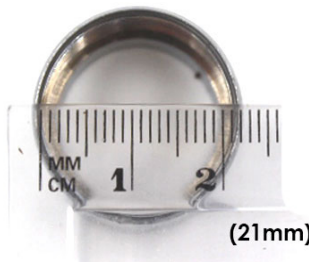
If the standard adaptor rings don't fit to your tap/faucet, please email us at [info@alkaway.com.au](mailto:info@alkaway.com.au) with a photo of your tap/faucet and a photo showing a very clear measurement of your aerator as pictured. Make sure the ruler runs exactly through the center and is measured in mm (not inches).



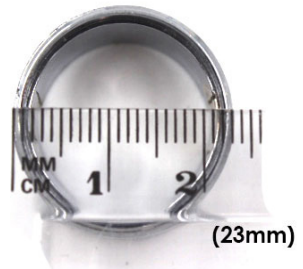
Female Thread  
(measure inside)



Male Thread  
(measure outside)



(21mm)



(23mm)

**STILL LEAKING?** Your filter may not be seated properly into the base. Undo it, add 3 layers of plumber's tape and re-assemble. Check again.  
Need more help? Go to [support.alkaway.com](http://support.alkaway.com)

# Troubleshooting

## Slow or No Water Flow

- Check the blue/white tap valve in the base of the UltraStream. Adjust the blue tap so that it is in-line with the inlet hose (the fully open position).
- Do you have any pre-filters attached? if so, remove the hose from the bottom of the UltraStream and make sure you are getting water flow.
- Make sure the hoses aren't kinked or twisted.
- If your UltraStream is slowly reducing in flow, it may be that it is nearing its end of use. If you continue to turn on your tap after it ceases flowing either your hose or your filter cartridge may fail.
- Your filter might be blocked and needs to be replaced.
- High Sediment water may require a special sediment prefilter to preserve your UltraStream filter's life.

## Diverter sprays or leaks

- Apply plumbers tap to the outside thread of the tap or diverter.

## Leaking water from connectors

- Remove to tube for the Quick Connect connector and re-cut ends.
- Try Pushing the tube further into Quick Connect fitting.

## Leaking from top

- Press the spout down firmly.

## Adaptors won't fit my tap

- See page 12 instructions to measure your aerator and email photos to [info@alkaway.com.au](mailto:info@alkaway.com.au).

## UltraStream Spurts

- This is due to the hydrogen content in the water. This water is the best to drink.

## Dripping UltraStream

- Some water sources are more acidic. This can generate large amounts of molecular hydrogen as the water reacts with the O-Dobi media. Some hydrogen will leave the water as a gas when the filter is not in use, and this gas may push a little water out of the UltraStream, producing a drip. This drip will usually slow down and stop within a couple of weeks. Remember this is not a leak, it is simply an effect of excess molecular hydrogen production.

## No pH Reading

- You need to use liquid pH Reagent similar to what was supplied this unit. pH strips or Litmus paper will not give you a correct reading.
- pH Reagent might be out of date or stored incorrectly.
- It might be time to replace your filter.



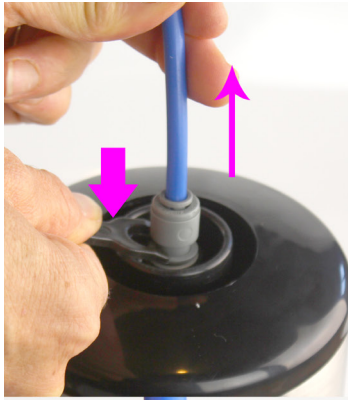
# How to Change Your Filter UnderSink

1. Pull out the Grey Converter with the blue hose in it. Using the Quick Connect Spanner (you can also use finger nail or butter knife) push down the grey collet as you pull the blue tube (see handy tips p7).



Quick Connect Spanner

2. Pull off the cap, stainless steel sleeve and base plate.
3. Grip the base and turn the filter **anti-clockwise** to unscrew the filter.
4. Put the new filter on the base and evenly screw the filter on clock-wise (**don't over tighten**).
5. Slide on the stainless steel sleeve on new filter (*Black & Stainless Steel version only*).
6. Replace the cap and base plate.
7. Push in the Grey or White Size Converter with the blue hose into the new filter.
8. Flush the new filter for 10 minutes on a low flow rate (It's a good idea to check for any leaks).



**Black & Stainless Steel version only**

(If stuck turn upside down, hold the stainless steel and tap on benchtop)



# What to Expect From Your UltraStream

People choose UltraStream for many reasons. Some buy for fluoride reduction, some because of the superior chlorine and chloramine reduction, some for heavy metals reduction.

Others buy because they have understood it is a great alternative to an electric water ionizer, delivering beneficial alkaline minerals independent of the amount in the incoming water. This is far superior to electric systems that depend upon alkaline minerals in the inlet water.

If you have rainwater you'll have virtually no alkaline minerals in your home supply, but the UltraStream adds beneficial magnesium and calcium.

## Filtration

Some buy simply because they have concluded that as a water filter it is vastly superior to the majority of filters on the market, using fully approved and tested US made media, backed up by our University Laboratory tests and EU safety certification for the life of the filter.

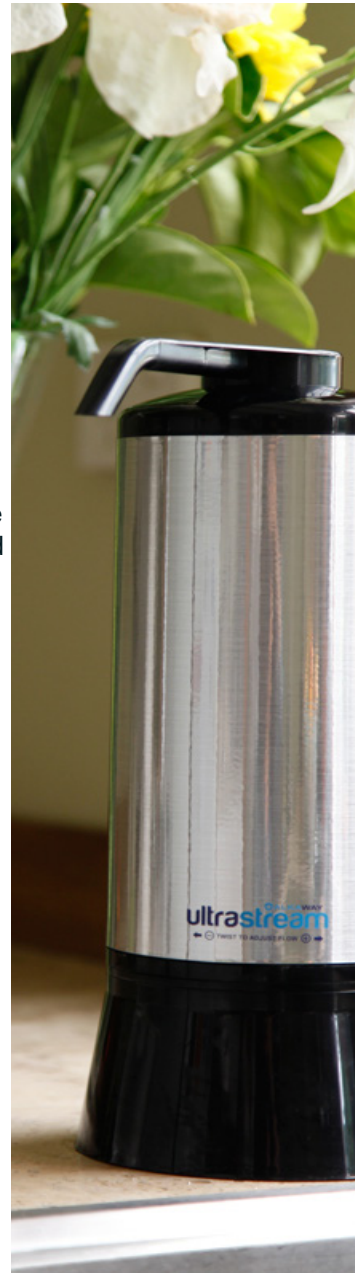
## Infused Molecular Hydrogen (H<sub>2</sub>)

Many of our newer customers ordered because they understand the importance of molecular hydrogen. They have researched the benefits of alkaline and hydrogen rich water. They have read enough of the hundreds of scientific studies testifying its benefits and have also read how the UltraStream delivers almost 4x the hydrogen of popular electric systems.

To get the maximum benefit of hydrogen rich water it's important to drink it as soon as possible after pouring from the UltraStream. H<sub>2</sub> is a gas that easily leaves its host.

Expect superb filtration of any municipal water. You may also expect that your UltraStream water will have an effect upon you when you begin drinking it.

Responses vary enormously. Most people say it's the best water they've ever tasted while others may take time to get used to the taste. The taste of your water is ultimately dependent upon your water supply and how our *O-Dobi* hydrogen generating media responds to your water.



# Tips

## Starting Off

We recommend beginning with a high flow rate (tap fully on). This keeps the pH of the water low and although it doesn't make full use of the *O-Dobi*, it allows your body to become accustomed to your new water.

We suggest 1-2 glasses a day, building to at least 2 litres (half a gallon) per day, and reducing the flow rate to increase the pH and hydrogen capacity. In this way your body has time to adjust to the detoxifying, antioxidant and super-hydrating of the UltraStream water.

Water may take some time to flow, and when it does, it may sputter. This is caused by hydrogen infusion in your water inside your UltraStream.

For most water supplies we recommend 1-2 litre per minute flow rate. This is adjusted by adjusting the stop valve in the base (see *Flow Control section*).

## Going Away?

If you are going away for over a month we recommend drying out the filter (take filter off and leave on sink for a day or two to dry) Then store in a dark, cool and dry place (like the bottom of your pantry).

When you get back its always a good idea to flush the unit for 5-10 minutes.

## BEST PRACTICE: FRESH IS BEST

For maximum antioxidant effect try to drink a full glass at a time rather than sip it from a bottle during the day. Molecular hydrogen is the smallest known element and it begins to leave the water as soon as it is poured.

You'll derive most benefit from drinking as much as you comfortably can at one time.

To learn about this amazing health discovery we suggest a visit to [www.molecularhydrogenfoundation.com](http://www.molecularhydrogenfoundation.com)



## Transport and Storage

Because it's the smallest atom in the universe, hydrogen easily passes through most materials, including a well-sealed plastic bottle. We recommend only glass or metal containers, with a good seal/cap. Even though you can carry it with you, try to drink it ASAP because this will ensure you get the maximum benefit.

## Plumbers

We apologize to the 'good' plumbers. We know you are out there! But we've had experience of plumbers who try to install UltraStream in their own way. That's why you should familiarize yourself with the installation instructions in this manual, especially if you are installing the undersink version. We DO NOT warranty incorrect installations and would much rather have a good happy relationship with you, our valued customer.

**Do not** allow your plumber to install the UltraStream with any other faucet than those available from AlkaWay. The faucet must be vented.

## Filter Life

The UltraStream filter has been tested in an independent university laboratory using municipal water up to 3000+ litres, based on 2 litres per person for a family of four.

We can't guarantee you will get that amount of water from your UltraStream before you need a filter change. All filters can only perform within the limits of the water they process. After years of experience, we found that some water holds more sediment than others. Sediment is what causes any water filter to block up. Your UltraStream filter may, therefore, last a longer or shorter time.

Sometimes contaminants or sediment in your water can block the filter, which may cause it to crack open. This is not manufacturing fault. It is a design function.

We strongly recommend that you change your filter at or before the recommended 12 month point. A water filter gathers toxins from your water, both organic and inorganic. When it becomes overloaded it may become a health hazard.



# Our Story

UltraStream came about as a result of 16 years of research and development by the AlkaWay Australia team.



After sourcing and supplying electric water ionizers for 12 years, the UltraStream was created.

Why? Because a natural, simple, closer-to-nature alternative to the complexities and maintenance of the electric systems was an obvious need.

Not to mention a price point that excluded no-one.

The UltraStream gives cutting edge filtration far beyond normal filters, removing a huge range of modern contaminants.

It alkalizes using natural minerals instead of electricity.

It infuses your water with molecular hydrogen, making it far, far more than simply clean water.

It installs in minutes anywhere - on the bench or undersink.

It is designed in Australia and made in California, USA, using the best of American filter technology.

## Tested For Life

- Tested to expected life of filter (one year) by independent Australian University accredited test laboratory.
- Tested for material safety to stringent EU standards.
- Tested by AquaSciences LLC for molecular hydrogen infusion capability.
- Plastics all EPA approved.
- Filtration media US safety approved and tested.



# Alkaline Water and Hydrogen Rich Water

The UltraStream produces both alkaline water and hydrogen rich water.

Alkaline water is water with higher levels of alkaline minerals. The UltraStream has its own 'storehouse' of magnesium and calcium beneficial alkaline minerals.

Molecular hydrogen in water is the subject of hundred's of scientific studies of its many health effects. The non-profit Molecular Hydrogen Foundation has been established to further the education of the Western world in the use and application of molecular hydrogen.

Molecular hydrogen ( $H_2$ ) consists of two conjoined hydrogen atoms. Water in the UltraStream reacts with *O-Dobi* magnesium media to create  $H_2$  and infuse it into the output  $H_2O$ .

## Scientific studies indicate a huge range of health benefits of Molecular Hydrogen including;

- Selective antioxidant support
- Inflammation support
- Anti-allergy
- Anti-apoptosis
- Cell signalling support

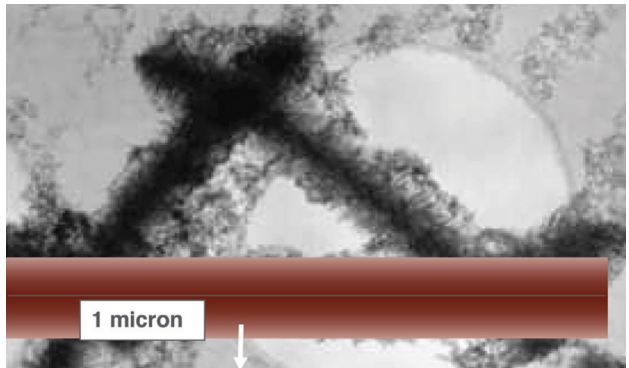
Find out more about Hydrogen at [www.molecularhydrogeninstitute.com](http://www.molecularhydrogeninstitute.com)

# Virus Guardian

Virus Guardian uses an Ultra-D material that utilizes an electrosorptive media technology to create submicron filtration through electro-adhesion and ion exchange. The high efficiency of the electrosorptive material reduces or removes pathogens, endotoxin, cysts, heavy metals and organic/inorganic chemicals. An agion silver coating helps inhibit growth and colonization of microorganisms.

When exposed to water between pH 5 – 9.5, a charge potential is generated by the natural crystal structure of the fibres. The resulting charge field radiates to a maximum distance of 1-micron from the fibres as represented by the red shaded area.

*The Ultra-D material is NSF 61-approved (Drinking Water System Components - Health Effects), and United States Pharmacopeia (USP) Class VI testing and endotoxin testing.*







---

Do you have a story about your water?

We'd love you to share it:

Email us at [info@alkaway.com.au](mailto:info@alkaway.com.au)

---

AlkaWay Australia | [www.alkaway.com.au](http://www.alkaway.com.au)

AlkaWay United States | [www.alkaway.com](http://www.alkaway.com)

AlkaWay Canada | [www.alkaway.ca](http://www.alkaway.ca)

AlkaWay UK/EU | [www.alkaway.co.uk](http://www.alkaway.co.uk)

AlkaWay Singapore | [www.alkaway.sg](http://www.alkaway.sg)

AlkaWay Support | [support.alkaway.com](http://support.alkaway.com)